

Wellington Park

Mountain Bike Map



Bike Riders Code of Conduct:

Respect other trail users

- Alert other trail users of your presence.
- Slow to their speed when passing.
- Slow down for corners and blind spots.

Stay on designated bike riding trails

- Do not trespass on private land.
- Ride only on approved trails.
- Do not create new trails or short cuts.

Minimise your impact on the environment

- Avoid muddy trails.
- Do not skid.
- Take out your litter.
- Keep your bike clean to prevent the spread of weeds and plant diseases.

Be a safe rider

- Plan ahead.
- Wear a helmet.
- Know your ability and keep your bike under control.
- Be prepared for sudden changes in weather conditions.



Bike Grading System:

The trails open to mountain biking in Wellington Park have been graded according to their difficulty level. The grading symbols are also being included on trackside signs to help riders choose appropriate trails.



Good surface; no big climbs; little or no pushing necessary.
Suitable for beginners and novice mountain bikers.



May have rough sections and steep climbs; some pushing likely.
Suitable for experienced mountain bikers.

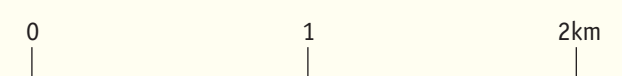


May be very rough; steep climbs, obstacles and technical sections likely.
Suitable for skilled and experienced mountain bikers only.

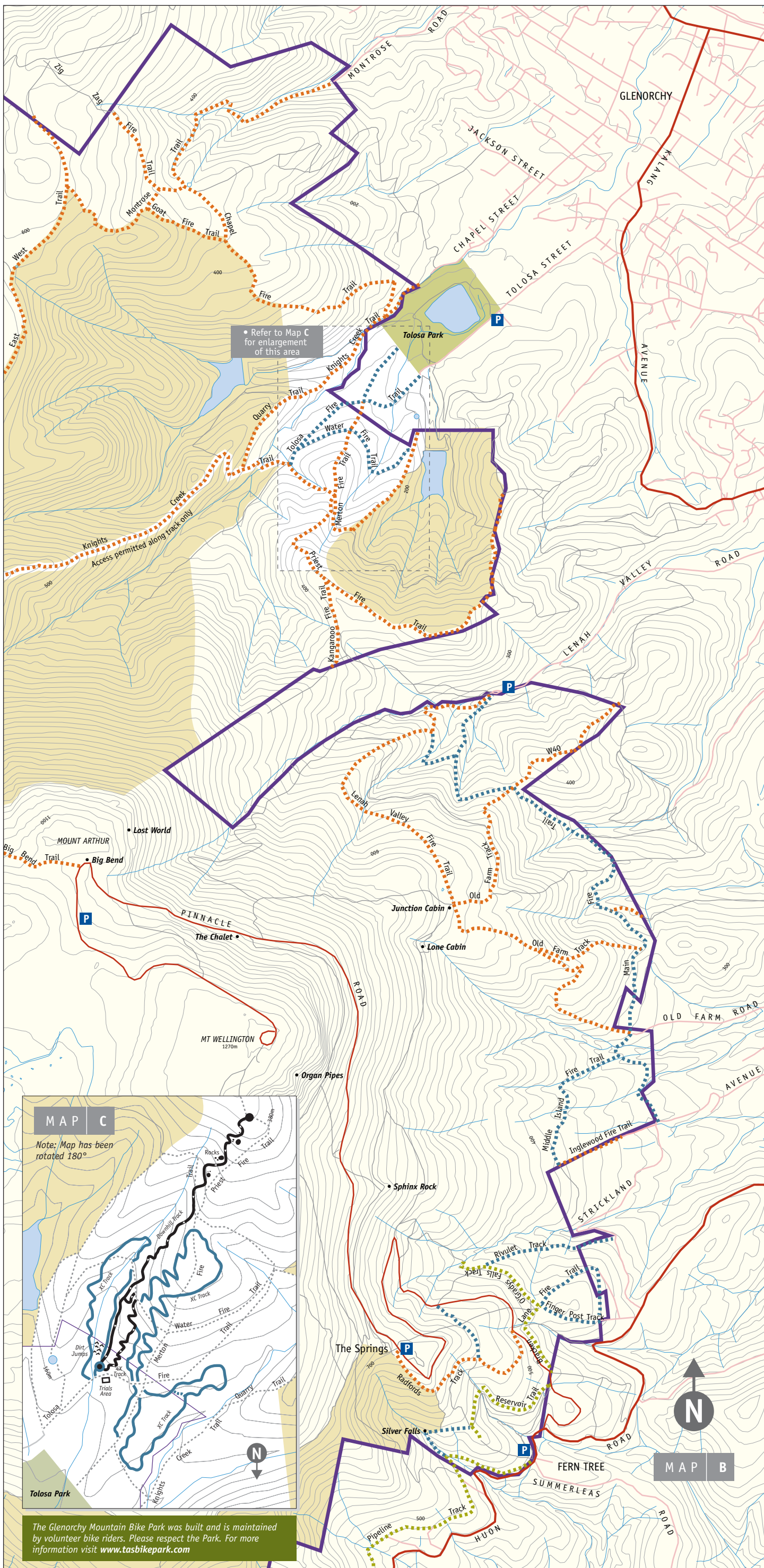


May be very steep and rough with obstacles, drops, jumps and constructed features.
Suited only to very experienced 'extreme' mountain bikers

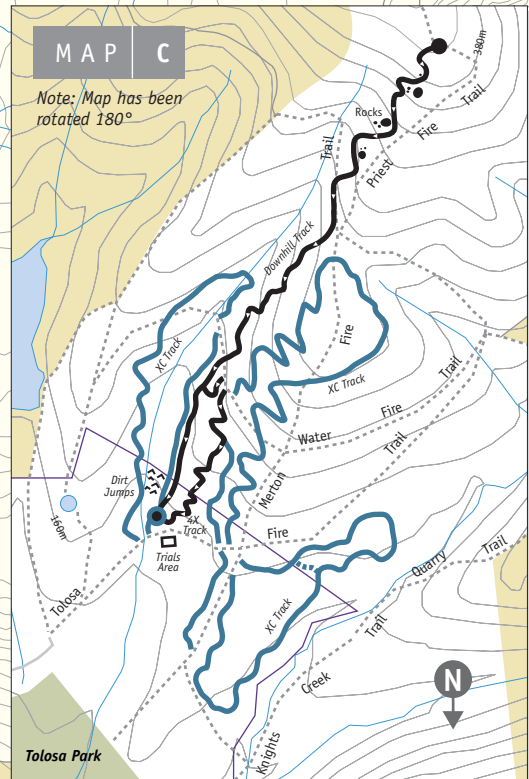
Please note that the Pipeline track (Fern Tree to Neika) and Radfords track are popular family tracks. Cyclists are asked to ride with particular care on these tracks and to adhere to the Bike Riders Code of Conduct at all times when riding in Wellington Park. Roads and tracks shown on this map do not necessarily indicate a public right of way.



Contour interval = 20m



Refer to Map C for enlargement of this area



MAP C

Note: Map has been rotated 180°

The Glenorchy Mountain Bike Park was built and is maintained by volunteer bike riders. Please respect the Park. For more information visit www.tasbikepark.com